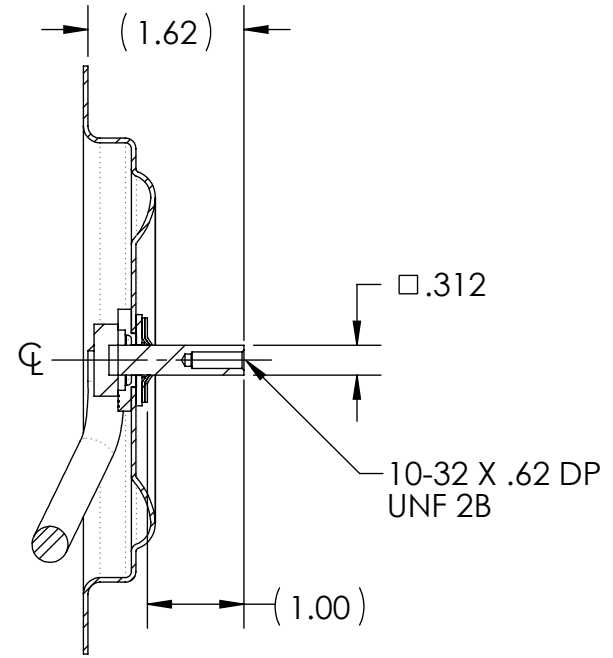
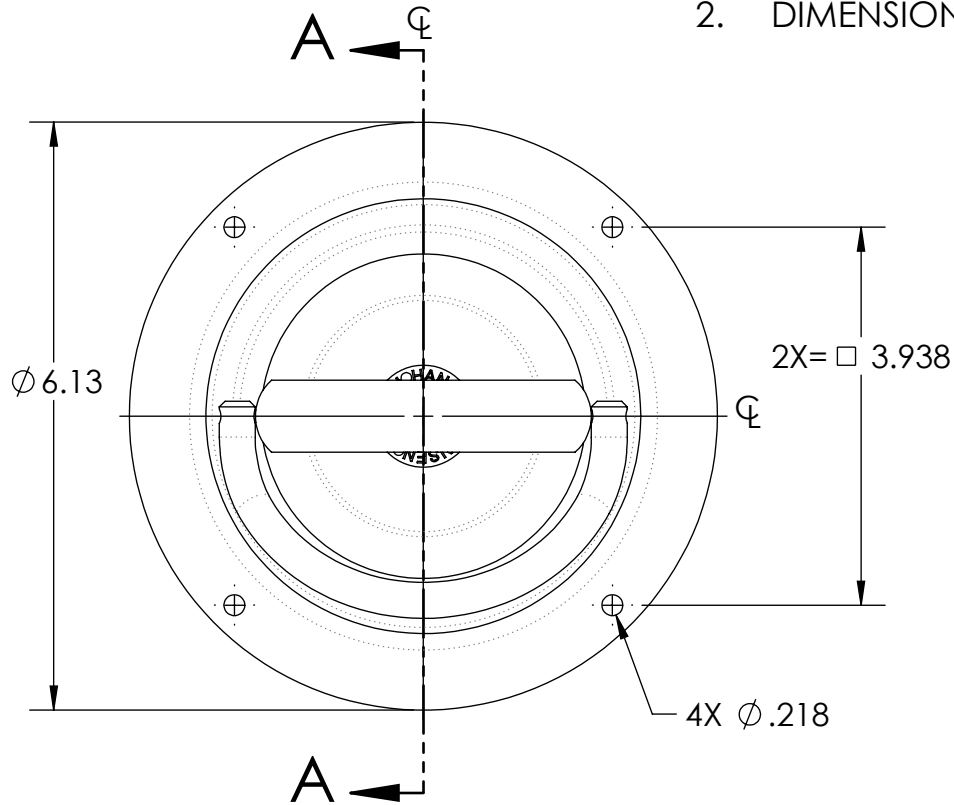
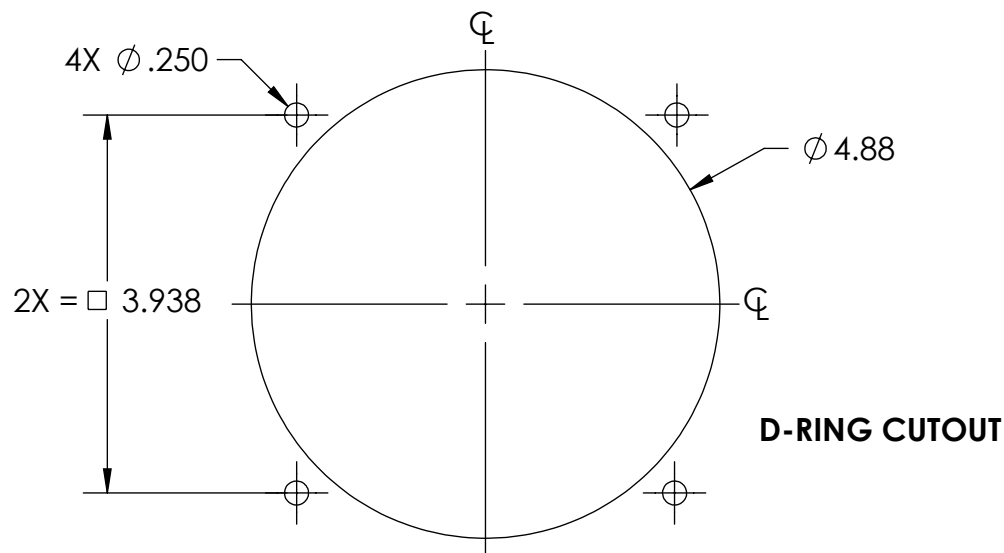


NOTES:

1. MATERIAL AND FINISH: POLISHED STAINLESS STEEL TRAY AND HANDLE.
2. ALL OTHER COMPONENTS ARE STAINLESS STEEL OR ZINC PLATED STEEL.
3. DIMENSIONS ARE FOR REFERENCE ONLY.



SECTION A-A



D-RING CUTOUT



DESCRIPTION:	ASSEMBLY #79-L SS SPECIAL W/HOLES	Weight	.76 LBS
Part Number:	S79LXXXSPBPM-H	REV	1

PROPRIETARY NOTICE: THIS DRAWING IS EXCLUSIVELY THE PROPERTY OF HANSEN INTERNATIONAL INC. AND SHALL NOT BE COPIED OR PASSED ON TO A THIRD PARTY WITHOUT OUR PRIOR WRITTEN APPROVAL. WE WILL RETAIN ALL RIGHTS FOR PATENT ISSUE OR REGISTRATION OF DESIGN.  
©2020 Hansen International, Inc.