

 **HANSEN**  
INTERNATIONAL



**A HIGHER STANDARD**

WHEN YOU'RE A PART  
OF SOMETHING  
**BIGGER**





# EVERY PART MATTERS



Every day, every hour, every minute – men and women across the world are putting their lives on the line to save others. We're able to depend on them because they're able to depend on their equipment, vehicles, and hardware.

When every second counts, it's imperative our everyday heroes have hardware they can count on – **Roll-Up Doors** that are reliable, **D-Rings** that are durable, and **Handles** that can hold their own against the hard days and long nights.

For over 100 years, our team at Hansen International has been manufacturing hardware and parts that do just that. We take pride in every part we make because we know it's a part of something bigger. Using only the finest materials and innovative designs, we define *A HIGHER STANDARD*.

# THE HANSEN DIFFERENCE

## A HIGHER STANDARD

For us, it's about people – and providing those people with the most reliable, innovative products that work as hard as they do.



**INNOVATIVE LEADER IN THE MARKET PLACE**



**UNPARALLELED CUSTOMER SUPPORT**



**UNIQUE PATENTED & TRADEMARKED PRODUCTS**



**CUSTOM ENGINEERING**



**SUPERIOR SERVICE AND ON-TIME DELIVERY**



**EXCELLENT QUALITY AND DESIGN OF EACH PRODUCT**

“

ANYONE CAN BUILD AND SELL A PRODUCT. THE KEY WITH OUR COMPANY WAS HOW RESPONSIVE HANSEN HAS BEEN. THEIR STAFF TAKES A HANDS-ON APPROACH TO SOLVING PROBLEMS AND TAKING CARE OF ANY ISSUES FOR THE END USER, OUR CUSTOMER. THEIR WARRANTY SHOULD SPEAK OF THE CONFIDENCE LEVEL THEY HAVE FOR THEIR PRODUCTS. WE ARE VERY MUCH PLEASED WITH THE QUALITY OF PRODUCT AND THE SERVICE.

RON J. CHEVES  
SOUTH CAROLINA FIRE APPARATUS, LLC

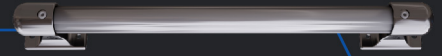
”



LENGTH "Z"  
CROSS CUT KNURLING  
SEE NOTE 2

## GRAB RAILS

Industry-proven and built to support, sustain, and improve safety, our grab rails have a large selection of features, sizes, and finishes to choose from.



## GRAB HANDLES

Our interior grab handle is a versatile pull handle built to provide secure gripping and supportive assistance.

## BACKLIT GRAB RAILS

Our patented backlit grab rail offers LED illumination for safety while also providing an anti-slip surface with or without rubber inserts for secure gripping.



## SUN VISORS

With innovative design and advanced manufacturing, our sun visors are tailored to meet any requirements. Mounting hardware, special materials, and rod configurations are just a few of the many components.



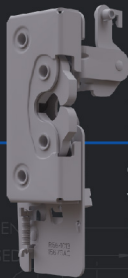
## TOW HOOKS

Capable of withstanding the toughest of towing applications, our towing hooks offer dependability for everyday use and emergency situations.



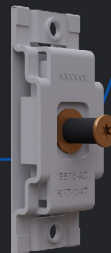
## ROTARY LATCHES

Our robust rotary latch is designed with force-close convenience and rotary-action security.



## STRIKERS

Our striker secures the close of the door by marrying with the rotary latch.



## OUTSIDE HANDLES

Our innovative outside handles are designed to meet any need with a wide variety of locking capabilities, material and finish options.



2.79 OPEN  
1.63 CLOSED

2X Ø.25

2X Ø.109

Ø.265

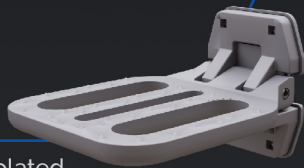
# HARDWARE

THE TOUGHEST IN THE FIRE & EMERGENCY INDUSTRY



## FOLDING STEPS

Reliable and chrome-plated, our folding steps are built to provide safe footing for first responders with a non-slip surface and large stepping area.



## PADDLE HANDLES

Our innovative paddle handles are designed to meet any need with a wide variety of locking capabilities, material and finish options.








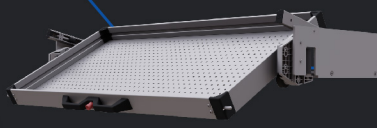
## ROLL UP DOORS

Our roll-up doors offer customizable features and options using the finest materials and innovative design to provide the utmost protection, durability, and productivity for exceptional performance.



## COMPARTMENT LIGHTING

Protected from water and salt, our lighting provides superior LED illumination to quickly and safely locate equipment at night.



## SLIDE & TILT DRAWER SYSTEMS

We offer flexible drawer systems that provide a tilting function for high-level storage and easy access to equipment.



## D-RINGS

Our patented line of d-rings is proven to perform. We offer many options including locking, non-locking, varying mounting options and a variety of finishes including stainless and black.



## LOCK-IN/LOCK-OUT DRAWER SYSTEMS

Our customizable drawers offer 100% extension, open & close locked position, and up to 771 pounds of load capacity while also being corrosion-resistant and maintenance-free.



 800.850.8070     803.695.0873

[hansenint.com](http://hansenint.com)

 130 Zenker Rd. | Lexington, SC 29072